

Typical 22 ga. Kynar Painted
Zincalume Coated Steel
(Also available in aluminum)

Fully Adhered 1" ISO Stiffener
(R 6.2 per inch)

20 Ga. Galvanized or Zincalume
standoff (depth as per spec)

Non-gassing backer foam rod
(see specification for type)

Continuous caulking
(see specification for type)

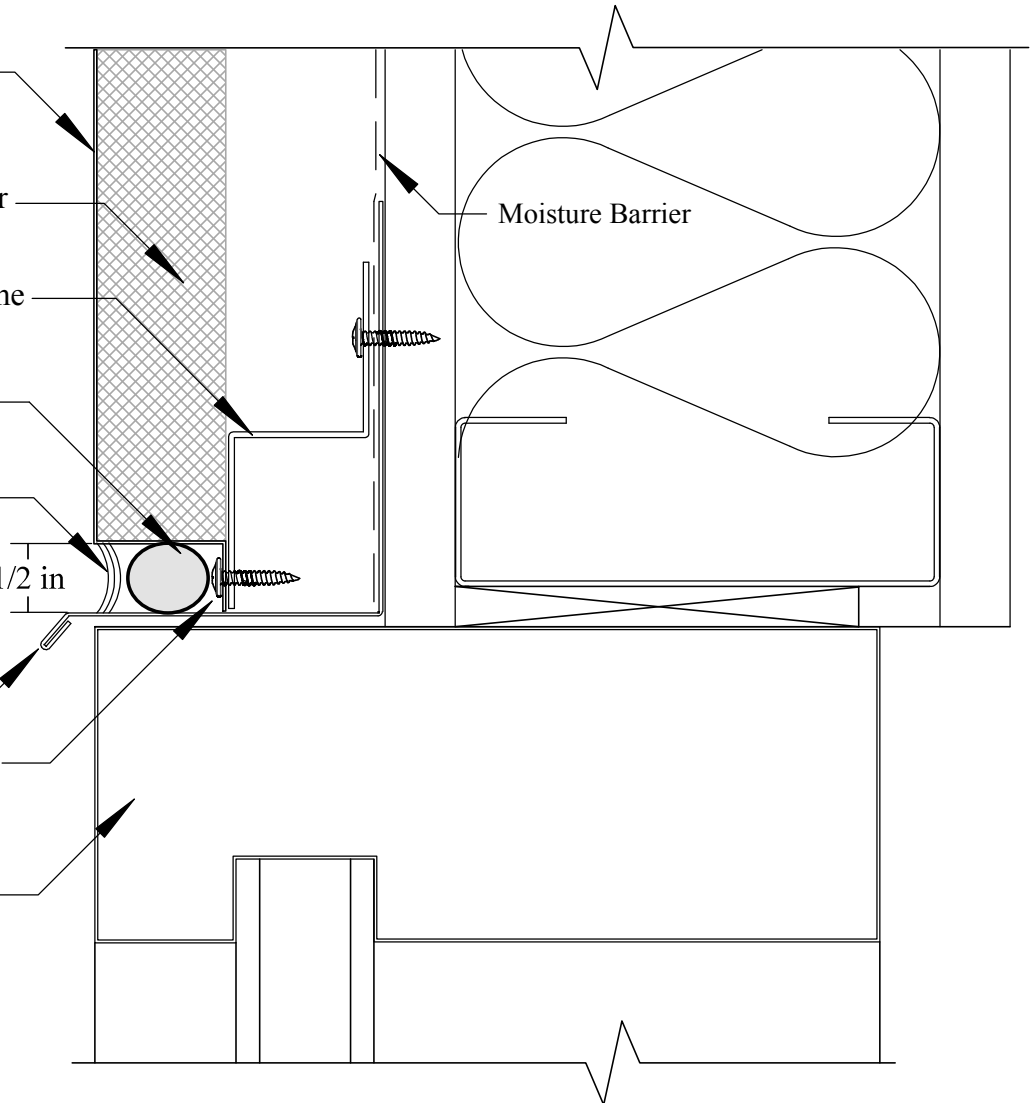
1/2 in

Moisture Barrier

Drip flashing

Panels attach to stand off with
#8 modified truss head screw

Glass System as occurs



TYPICAL WINDOW HEAD (FLUSH)

January 2009

M-S-ISO-D6

Metposite STD 1" ISO

Copyright (c) 2008 Metposite LLC, all rights reserved under U.S. and international law

 WWW.METPOSITE.COM
METPOSITE
FLAT METAL WALL PANELS
3761 2nd. Street Hubbard, Oregon 97032
503.981.5900 fax 503.981.5901
www.metposite.com